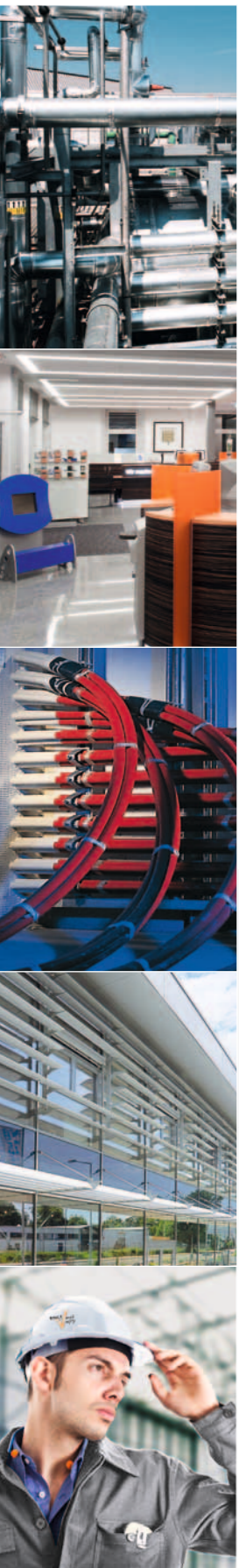


The Bohle Group
Committed to Quality

- Insulation technology
- Interior fitting
- Fire protection
- Metal construction



Locations of Insulation technology

Gummersbach

- Berlin
- Cottbus
- Hamburg
- Kiel
- Köln
- Leipzig
- Ludwigshafen
- München
- Pulheim
- Rostock
- Frankreich (String-Wendel)
- Polen (Betchatów, Krakau)



■ **Bohle Isoliertechnik GmbH**

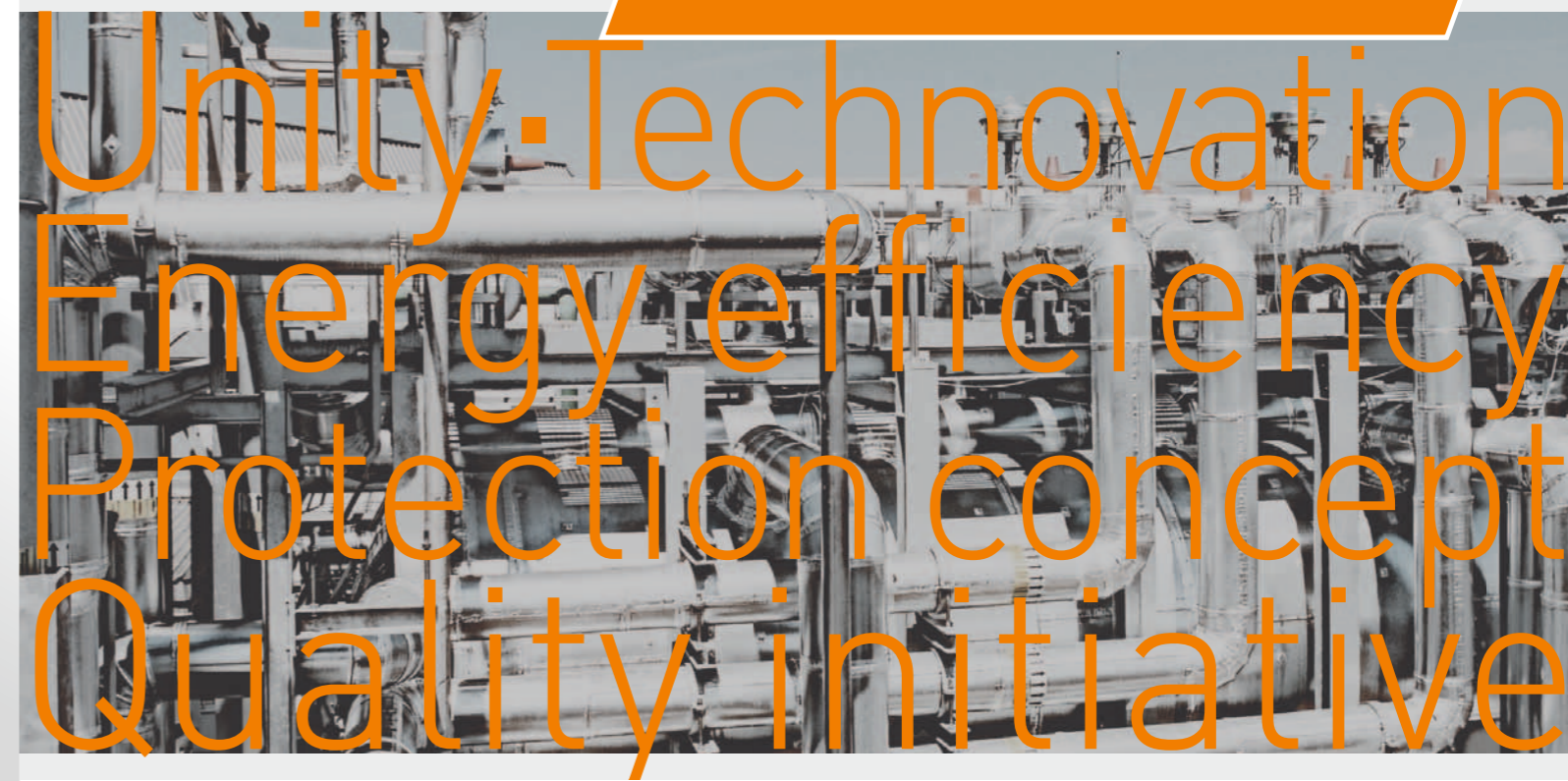
Headquarters
Stauweiher 4 + 17
51645 Gummersbach/Derschlag
Germany

Phone +49 2261 541-0
Fax +49 2261 541-257

info@bohle-gruppe.com
www.bohle-gruppe.com



■ Bohle Insulation Technology ...



... committed to quality



... committed to quality

Unity

At the Bohle Group, unity is about more than just managing suppliers! For us, it means partnership. And we treat partners fairly: from preparing clear quotes to transparent completion, excellent quality, the highest level of service and accurate billing – with no ifs or buts. We are united with our partners on a permanent basis.

In this way, we achieve absolute partner satisfaction.

The Bohle Group has a broad-based presence in the following areas:

- Insulation technology
- Interior fitting
- Fire protection
- Metal construction

This allows it to leverage specialist knowledge garnered from complementary fields. The result: punctual, comprehensive and cost-effective solutions for our customers.



... committed to quality

Energy efficiency

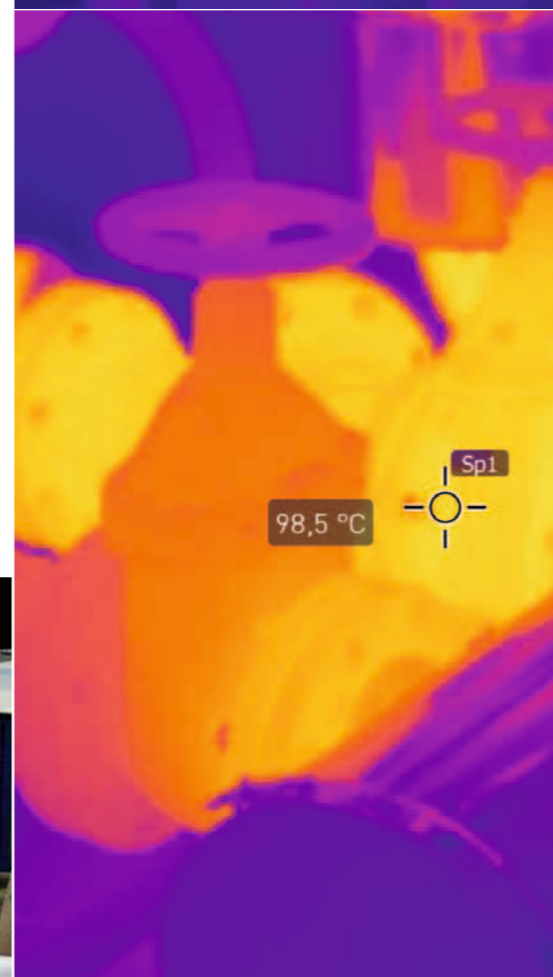
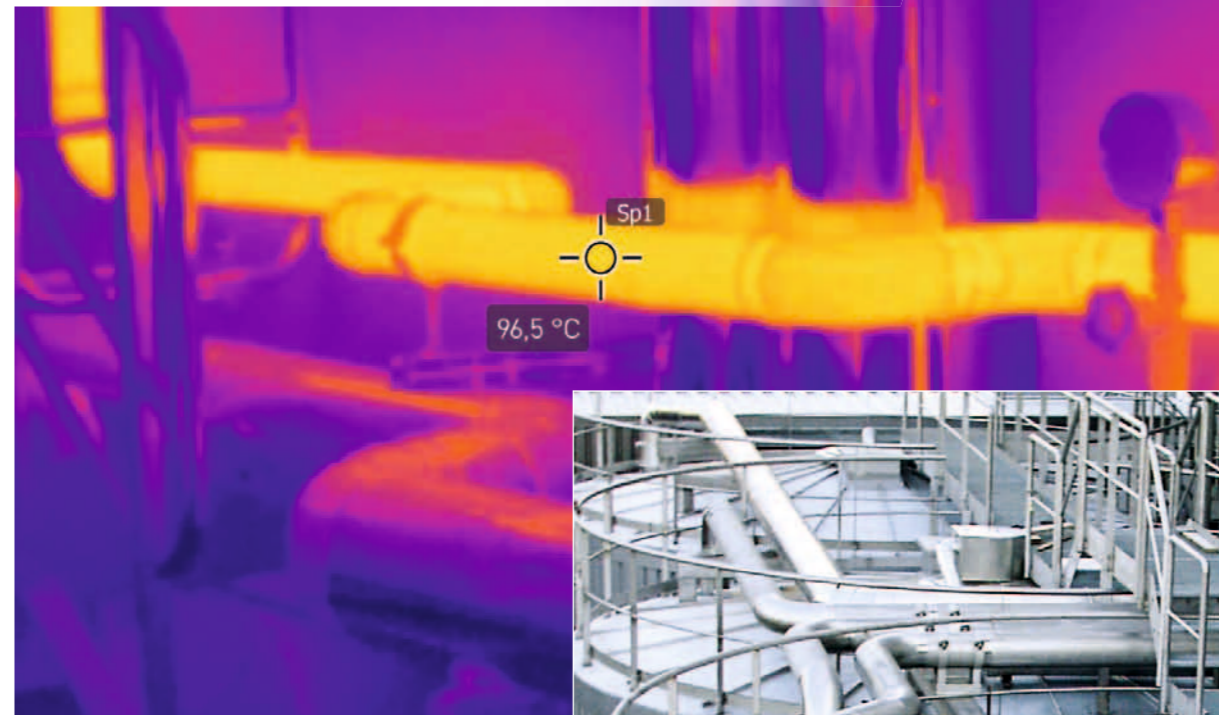
Optimising energy efficiency for our customers is a key objective of our business activities.

- Plant inspections and amortisation calculations
- Reduction of heating and cooling losses
- Process assurance and optimisation
- Massive reduction in energy costs

From a global perspective, we practice active environmental protection alongside our partners and save a great deal of valuable resources. Our work pays off for the benefit of our customers.

Internally, energy efficiency means being at our partners' disposal with compact, competent teams.

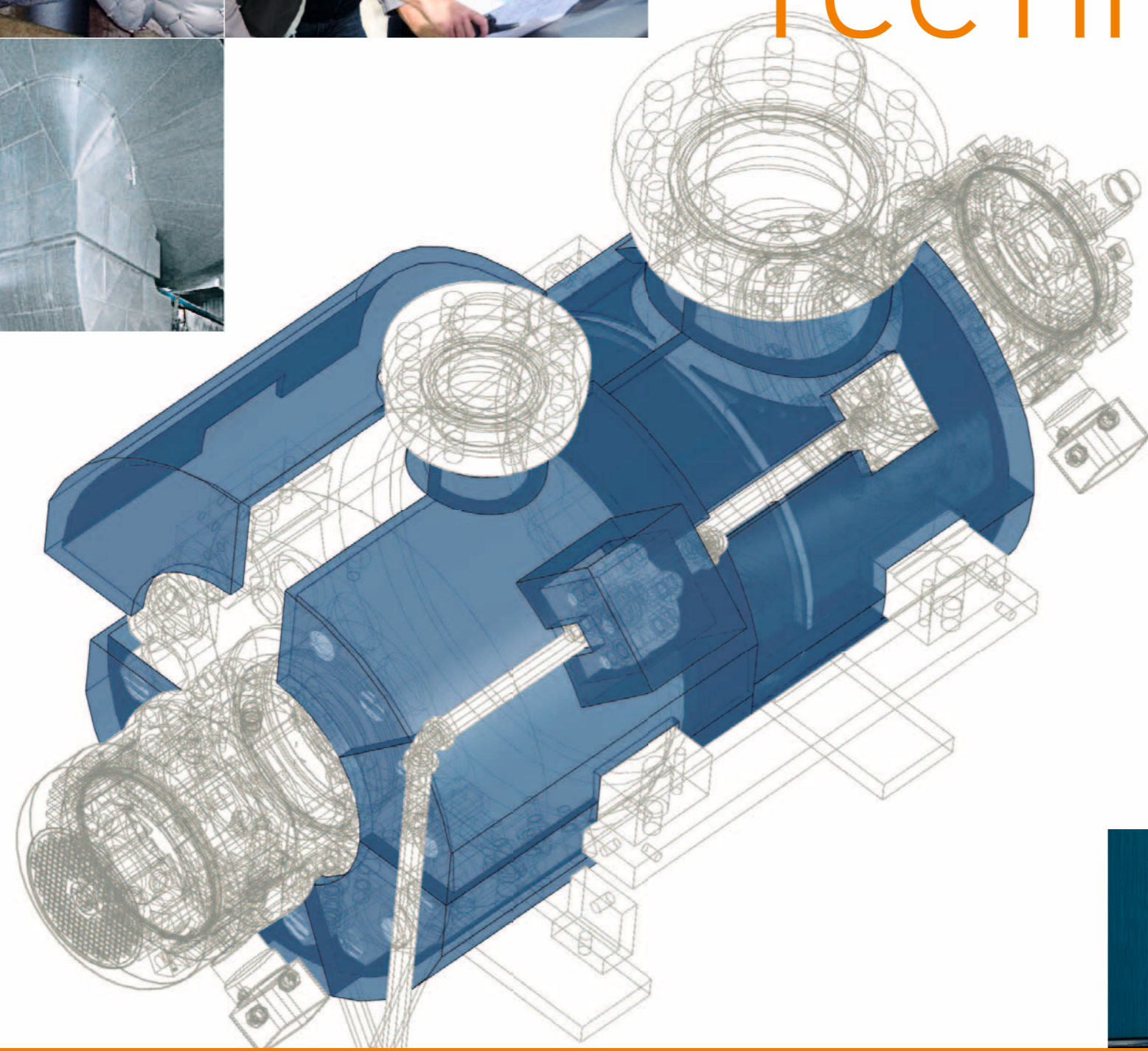
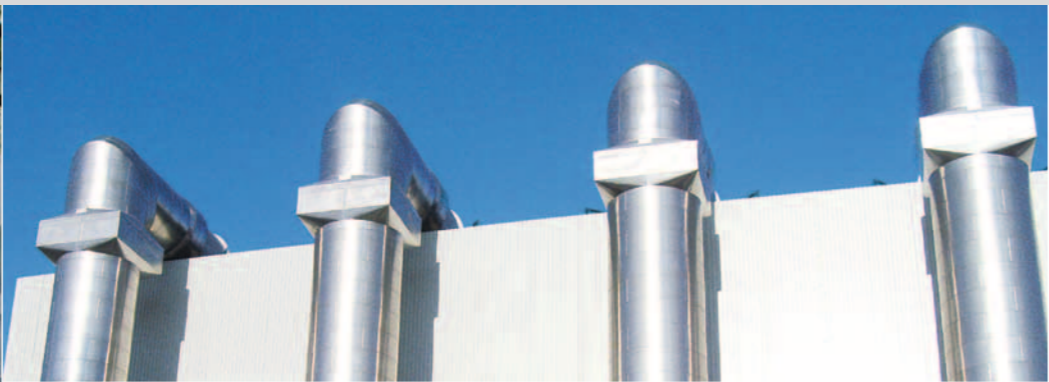
All tasks are completed efficiently. Consistent interfaces prevent communication losses and ensure that processes run smoothly on a lasting basis.



ENERGY EFFICIENCY



ENERGY LOSS



... committed to quality

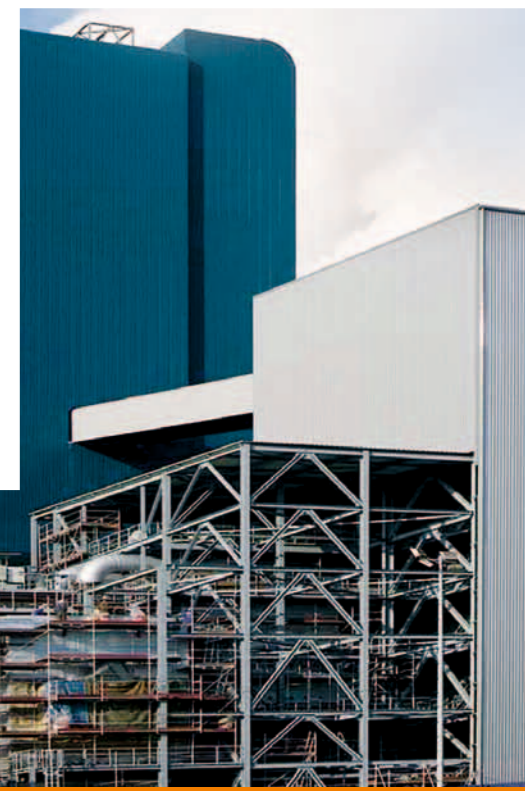
Insulation technology is a generic term. For us, it includes a multitude of individual disciplines. Depending on the size of the project, these disciplines are applied in an industry-specific manner or combined to form a comprehensive mixture.

In all types of projects and insulation work, we deploy our extensive experience, going back more than 90 years, as well as our technical versatility and extensive industry expertise, to achieve particularly effective results.

Technovation

Technology and innovation – a one-stop provider ...

- Insulation of piping and tanks
- Insulation in plant engineering
 - Power-plant technology
 - Flue-gas cleaning/filter technology
 - Autoclaves for masonry blocks
 - Silo construction
 - Column construction
- Special insulation systems
 - ISOFLEX® insulating jackets
 - Spray insulation
 - Blown-in insulation systems
 - Spray insulation systems
- Thermal insulation
 - On-site PUR foam
- Technical sound insulation
 - Acoustic room and hall coverings
 - Capsules, enclosures and cabins
 - Sound insulation for ventilation and exhaust gases
 - Sound baffles for cooling towers
 - Special constructions: doors, flaps, lifting gates



... committed to quality

Our customers seek occupational safety and health protection for their staff and the company environment. Besides thermal insulation, another key area of Bohle's insulation technology focuses on sound insulation.

Although the insulation technologies are similar, the concepts and implementation follow their own rules. At Bohle, we master these down to the last detail:

- Sound insulation measures

are developed and implemented as a specific, individual assignment. Often, however, they also form an integral part of complex insulation measures. Our specialists in the field know what is possible and create optimum solutions – from a technical and business perspective.

We create interdisciplinary synergies for the benefit of our customers.



HSE – Health, Safety, Environment at Bohle

For all of our projects, success depends on the health of the people involved. We wholeheartedly believe in HSE and therefore work as a team to promote this topic by consistently realising any potential for improvement. We believe that every member of the team should take responsibility for this.

- We achieve a high standard of HSE performance through:

- Risk assessment
- Construction-site and project safety plans
- Clear responsibilities
- Detailed descriptions of HSE-related tasks
- Training certificates
- Operating instructions
- HSE training
- Campaigns such as "work safety"



Protection concept



... committed to quality

Quality initiative

Bohle stands for quality. This begins at the analysis and consulting stage. Only those who perform these tasks perfectly can go on to achieve successful implementation.

Bohle's QA management ensures a consistently high level of quality, from planning to execution and project handover with the associated documentation.



The three essential components of the quality concept are: utmost adherence to deadlines, utmost quality of execution, and working with our own project-trained staff.

We always hold all of the required certifications, as well as many additional certificates.

We are your reliable partner for "strategic supplier management".



Bohle insulation technology – partnership with customers!