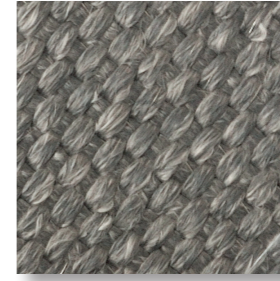
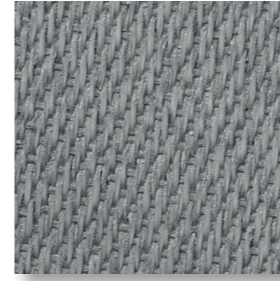
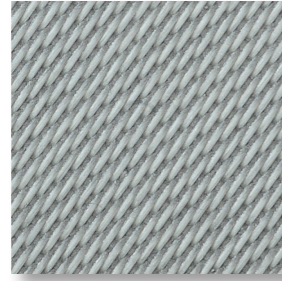
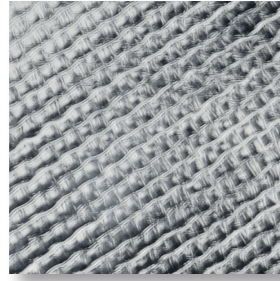
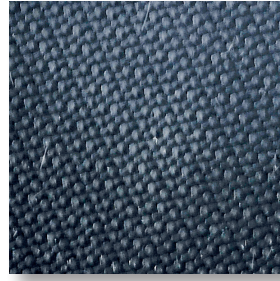


Materials used for ISOFLEX[®] - Insulating jackets



ISO-PTFE *anti-static*

Description:

Fibre made of glass fibre filaments with PTFE coating on one side. The PTFE coating (Teflon[®]) has excellent anti-stick properties.

Colour: Standard version in black (optionally available in grey)

Area of application:

Outer coverings for insulation padding / mats, anti-abrasive protective covers

Technical Data:

Fabric in Atlas weave

Weight of fabric: 425 g/m³ +/-10 %

Total weight

with coating: 560 g/m³ +/-10 %

Thickness: 0.38 mm +/-10%

Tensile strength: Warp > 3500 N/5 cm
Weft > 2600 N/5 cm

Temperature range: - 50 °C to 280 °C

Short-term temperature resistance up to 315 °C

Fire resistance according to FMVSS302:

Passed

Resistance to fluids:

Good resistance to industrial substances and cleaning agents

ISO-ALU

Description:

Fabric made of glass fibre filaments with aluminized polyester film adhesively applied to one side. This flexible fabric provides good thermal resistance. The outer coating is ideally designed to keep steam out and has excellent reflective properties

Colour: silver

Area of application:

At relatively low temperatures as protective cladding and flexible insulation

Technical details:

Fabric in broken twill weave

Weight of fabric: 650 g/m³ +/-5 %

Total weight

with coating: 800 g/m³ +/-5 %

Thickness: 0.85 mm +/-5 %

Tensile strength: Warp >650 N +/-10 %
Weft > 550 N +/-10 %

Temperature range:

Outer surface coated with high-temperature-resistant PET film coating = resistant up to 250 °C
Inner surface with high-temperature resistant polyurethane layer = resistant up to 200 °C

Fire resistance according to FMVSS302:

Passed

ISO-PU

Description:

Fabric made of glass fibre filaments with a flame-resistant polyurethane coating. The Al pigments impregnated into it guarantee good heat reflection and provide an attractive alternative to aluminium foil clad fabrics.

Colour: silver-grey

Area of application:

Flexible insulation, soldering protection, fire-retardant hangings, smoke-retardant hangings, expansion joints and seals

Technical data:

Fabric in broken twill weave

Weight of fabric: 660 g/m³ +/-5 %

Total weight

with coating: 685 g/m³ +/-10 %

Thickness: 0.80 mm +/-10 %

Tensile strength: Warp > 4600 N/5 cm
Weft > 4400 N/5 cm

Temperature range:

Untreated fabric up to 550 °C continuous
Coated fabric up to 250 °C continuous

ISO-Silikon

Description:

Fabric made of glass fibre filaments with a silicon rubber coating on one side. This coating (weighing approx. 90 g/m³) contains aluminium pigments.

Colour: silver-grey (also available with optional coating on underside)

Area of application:

Expansion joints, flexible insulation, soldering protection, fire protection and sealing

Technical data:

Fabric in broken twill weave

Weight of fabric: 420 g/m³ +/-10 %

Total weight

with coating: 510 g/m³ +/-10 %

Thickness: 0.45 mm +/-10 %

Tensile strength: Warp > 3900 N/5 cm
Weft > 2600 N/5 cm

Temperature range:

- 40 °C to 250 °C
(for short periods up to 300 °C)

Fire resistance according to FMVSS302:

Passed

Resistance to fluids:

Good resistance to industrial substances and cleaning agents

ISO-VA

Description:

This product consists of a glass fibre fabric with a flame-resistant polyurethane layer. The Al pigment impregnated into it ensure good heat reflection and provide an attractive alternative to aluminium foil clad fabrics.

Colour: silver-grey

Area of application:

Flexible insulation, weld protection, fire-retardant hangings, smoke-retardant hangings, expansion joints and seals

Technical data:

Fabric in Atlas weave ISO 9354

Weight of fabric: 660 g/m³ +/-5 %

Total weight

with coating: 680 g/m³ +/-10 %

Thickness: 0.70 mm +/-10 %

Tensile strength: Warp > 2500 N/5 cm
Weft > 2500 N/5 cm

Temperature range:

Untreated fabric up to 550 °C continuous
Coated fabric up to 200 °C continuous

Fire rating:

BS 476: Part 7, 1997

Approvals:

SBG Approval

No. 114.180 BWB Approval

ISO-HT-VA 750

Description:

Fabric made of glass fibre filaments with a PU layer and aluminium pigments applied to one surface, VA reinforced and flame-resistant. This product has very good resistance to chemicals, excellent physical properties and can take very heavy mechanical loading.

Colour: Grey

Area of application:

Flexible insulation in high-temperature zones, exhaust conduits

Technical data:

Plain-weave fabric DIN 61 101-1

Weight of fabric: 1275 g/m³ +/- 8 %

Thickness: 1.60 mm +/- 10 %

Tensile strength: Warp > 3000 N/5 cm
Weft > 1500 N/5 cm

Temperature range:

Fully fitted up to 700 °C
(for short periods up to 750 °C)